

ATTACCO SOSPENSIONE

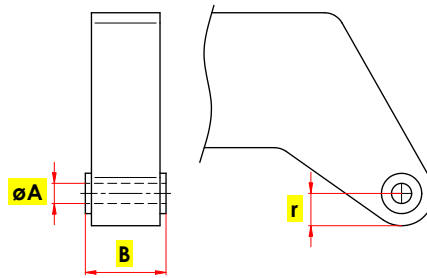
I- L'attacco di sospensione è uno snodo di collegamento tra l'attrezzatura e il braccio della gru/escavatore

GB - Suspension link is a joint connection between the equipment and the arm of the crane/excavator

D - Die Aufhängung ist ein Kreuzpendel zwischen dem Gerät und dem Arm des Krans / Bagger.

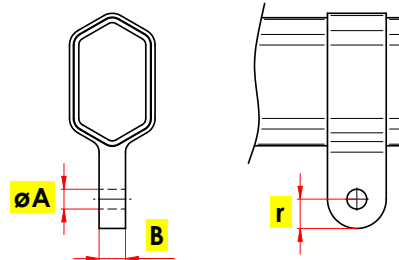
F - L'attaque de suspension est une connexion entre le dispositif et le bras de la grue / pelle.

E - El ataque de suspensión es una conexión de unión entre el dispositivo y el brazo de la grúa / excavadora



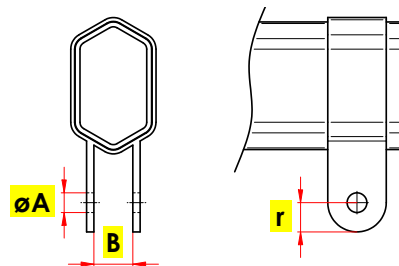
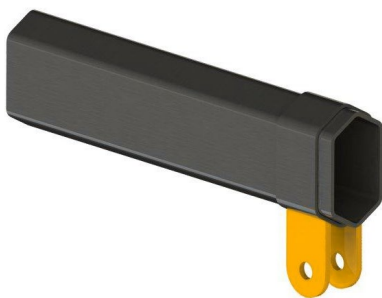
$\varnothing A$	B	r

TERMINALE ESCAVATORE / EXCAVATOR BOOM



$\varnothing A$	B	r

TERMINALE GRU MASCHIO / MALE BOOM TYPE



$\varnothing A$	B	r

TERMINALE GRU FEMMINA / FEMALE BOOM TYPE